

# Load Balance Setup

## Background

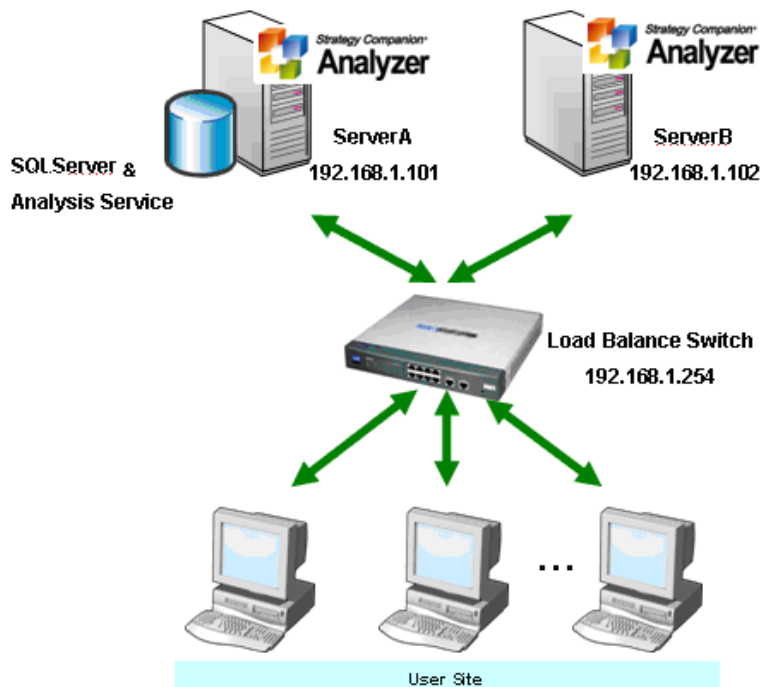
This document will provide you with step by step instructions that will enable you to setup Analyzer for a load balanced environment.

## Prerequisites

You should have a **Standard Analyzer License** (for the main web server).  
You should have a **Load-Balance Analyzer License<sup>1</sup>** (for the second web server).  
You should have a Load Balancer. This can be hardware, such as a Load Balance Switch, or software that emulates a Load Balancer<sup>2</sup>.  
You should have at least one Active Directory server.

## Setup Example

When the user connects to <http://192.168.1.254/analyzer>, the traffic will be re-directed by the Load Balance Switch to Analyzer on **ServerA** (192.168.1.101) and **ServerB** (192.168.1.102).



<sup>1</sup> When installing Analyzer using a Load Balance license, it will not ask you to create another metadata database. Also, the Load Balance license does not contain any Power User license information.

<sup>2</sup> When using a HW Load Balance Switch, please set it to use Level 7 and set Group Metric as Phash. For a SW Load Balancer, please make sure Affinity mode is set to use "Single".

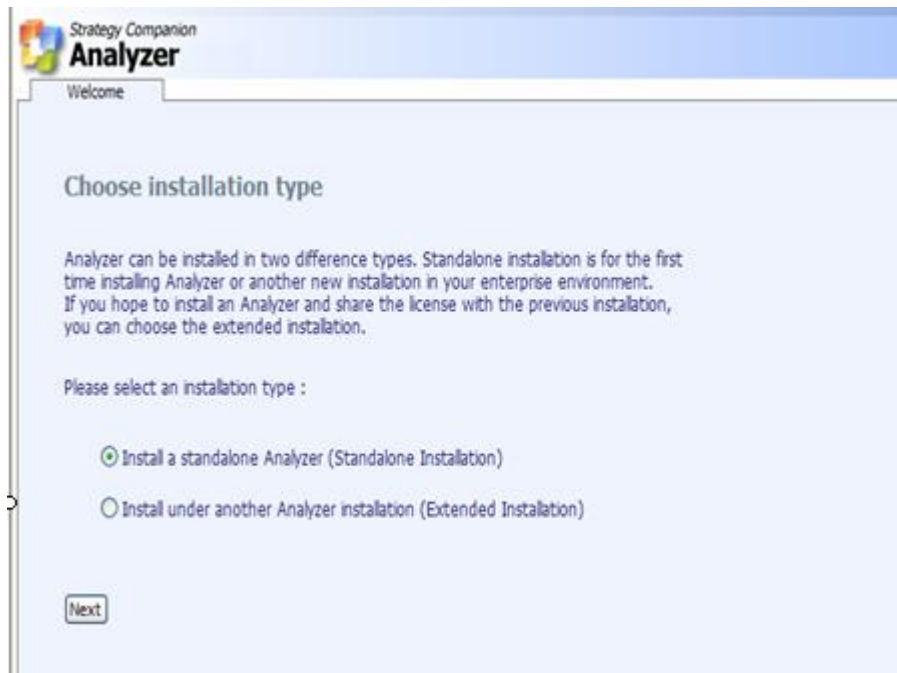
## Setup Procedures

Step 1: Assign all servers to the same domain.

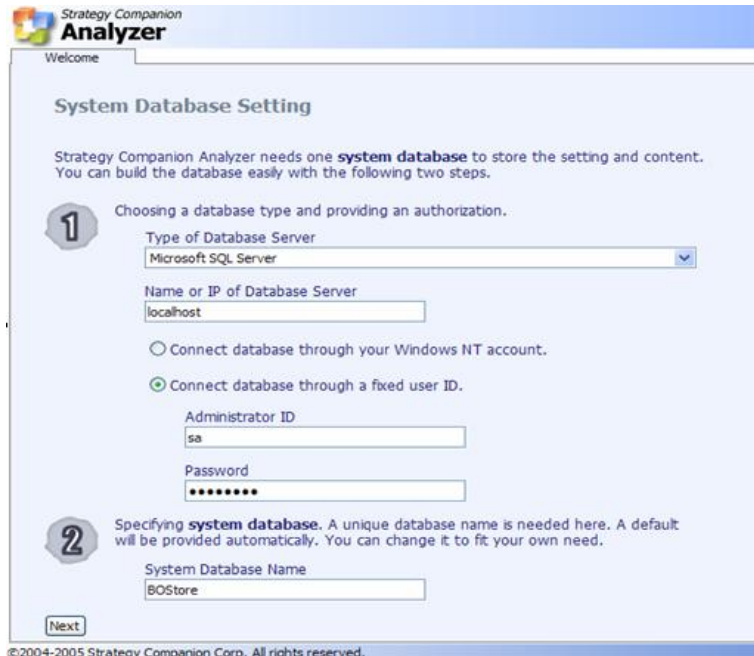
All servers must be under the same domain and must have a “trust” relationship.

Step 2: Install the first instance of Analyzer using a standard license.

Using the above system diagram as an example, install Analyzer on **ServerA** using the **Standard License Key**. After Analyzer launches, depending on your specific Analyzer version, you may need to select “**Install a standalone Analyzer (Standalone Installation)**” as the installation type. If no options are given, simply move on to the next step.



Set up an Analyzer **System Database** or **Metadata Database** per the setup wizard



**System Database Setting**

Strategy Companion Analyzer needs one **system database** to store the setting and content. You can build the database easily with the following two steps.

**1** Choosing a database type and providing an authorization.

Type of Database Server  
Microsoft SQL Server

Name or IP of Database Server  
localhost

Connect database through your Windows NT account.

Connect database through a fixed user ID.

Administrator ID  
sa

Password  
\*\*\*\*\*

**2** Specifying **system database**. A unique database name is needed here. A default will be provided automatically. You can change it to fit your own need.


System Database Name  
BOStore

Next

©2004-2005 Strategy Companion Corp. All rights reserved.

Follow the setup wizard to complete the initial setup steps.  
(Please review the **Analyzer Installation Guide** for other standard installation details.)

Step 3: Install the second instance of **Load Balance Analyzer** using the **Analyzer Load Balance Key** on **ServerB**. During the initial Analyzer setup, please select “**Install under another Analyzer installation (Extended Installation)**.”



**Choose installation type**

Analyzer can be installed in two difference types. Standalone installation is for the first time installing Analyzer or another new installation in your enterprise environment. If you hope to install an Analyzer and share the license with the previous installation, you can choose the extended installation.

Please select an installation type :

Install a standalone Analyzer (Standalone Installation)

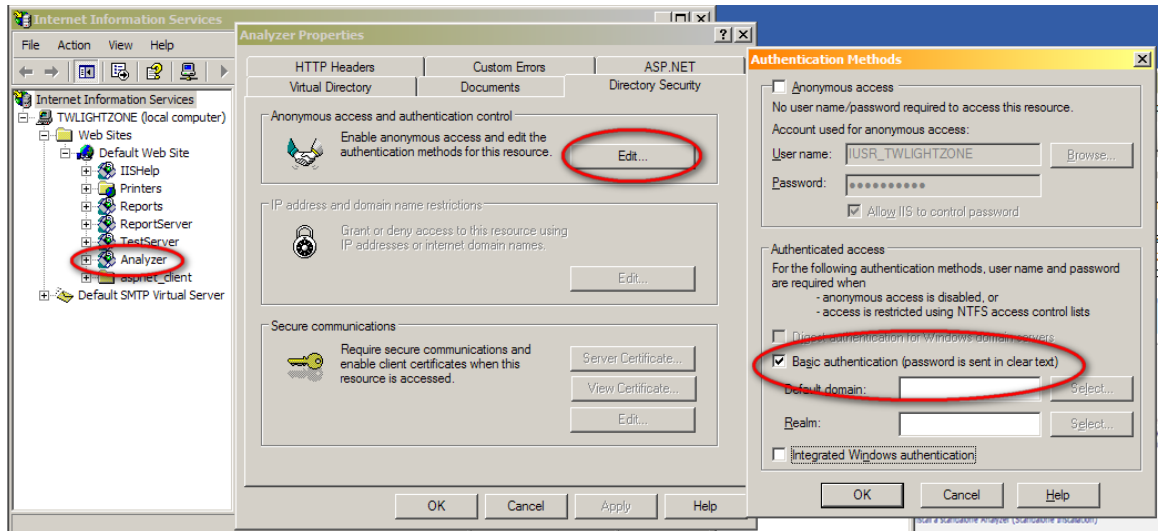
Install under another Analyzer installation (Extended Installation)

Next

When the **Extended Installation** is selected, the system will not ask you to create another **Analyzer System Database**. However, you should assign any extended instance created, to the same **Analyzer System Database** that you created in Step 2.

Step 4: Setup IIS Directory Security

Both servers must select and use **Basic Authentication**. Please note that this step heavily depends on your Load Balancer's requirements. Please review your Load Balancer's documentation for further details.



Step 5: Since Analyzer requires each session to use the same web server (Sticky IP/Sticky Session), there is no need to setup a session database on the SQL server.

Step 6: Restart Analyzer by restarting the IIS, or by using the Task Manager to terminate the **w3wp.exe** worker process.