

# Web Link Setup

## Background

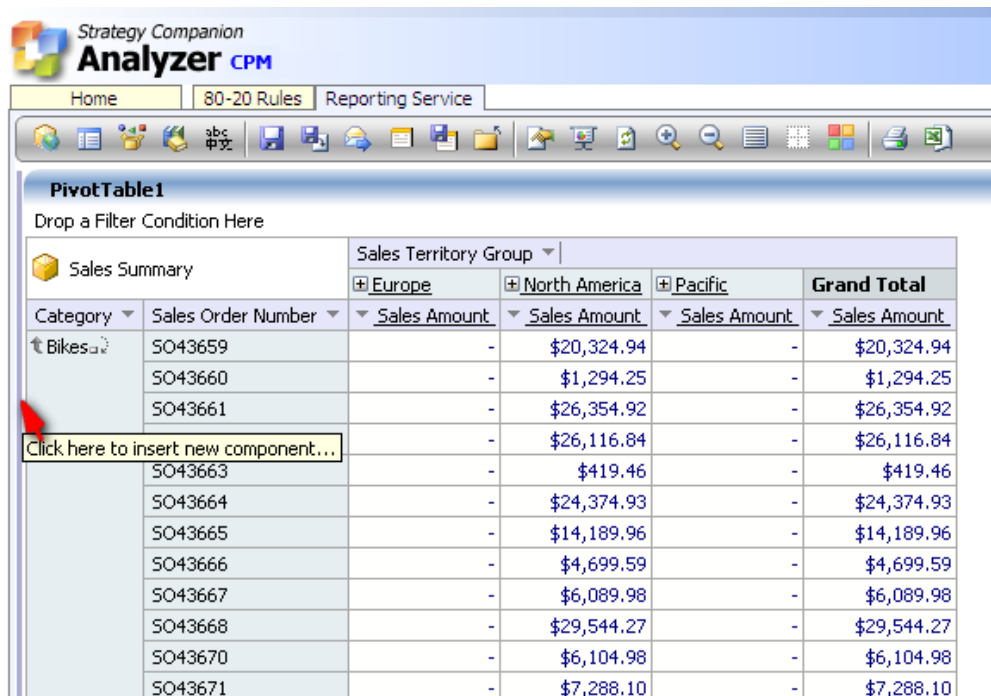
A Web Link is one of the many component types that can be a part of an Analyzer report. The Web Link behaves very much like a normal web browser, where a user can specify a URL and it will render the web page. In addition to displaying a simple web page, a user can also set the Web Link to receive a parameter sent from a Pivot table within the same report. This document explains how to setup a Web Link with a parameter.

## Prerequisites

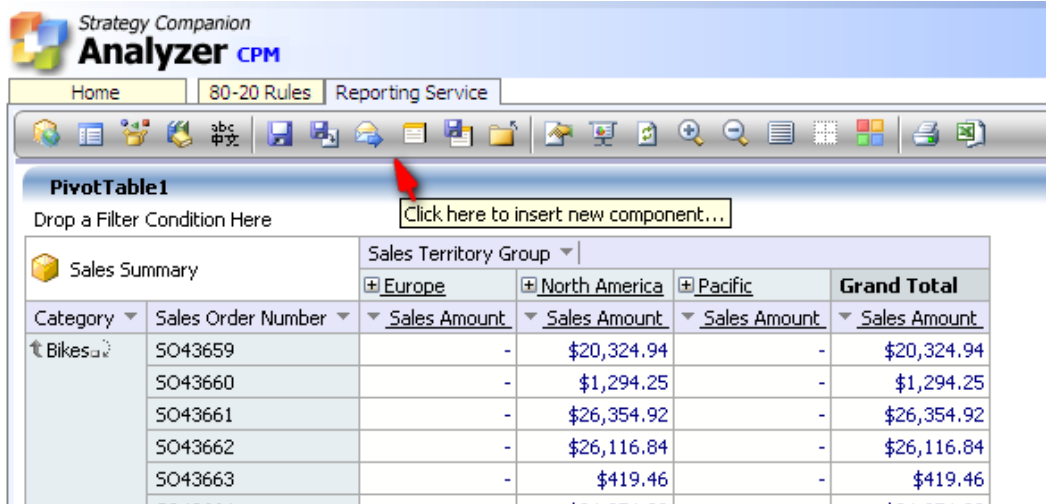
You should have access to Analyzer.

## Setup Procedures

1. In order to add a Web Link to an Analyzer report, simply move your mouse to the edge of any existing component in the report. A solid gray bar should appear when the cursor is in the correct spot:



You have the option of adding a Web Link to any of the four sides of a component. The side of the component you click on will determine where the new component is placed. For example, you may place the Web Link above the pivot table by clicking on the top edge of the pivot table.



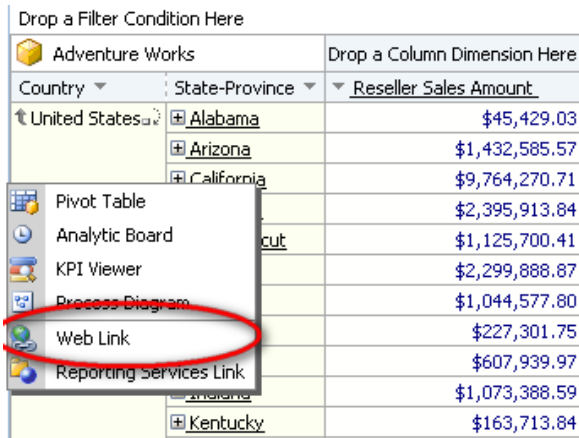
Strategy Companion  
**Analyzer CPM**

Home | 80-20 Rules | Reporting Service

**PivotTable1**  
Drop a Filter Condition Here | [Click here to insert new component...](#)

Sales Summary		Sales Territory Group			
		Europe	North America	Pacific	Grand Total
Category	Sales Order Number	Sales Amount	Sales Amount	Sales Amount	Sales Amount
Bikes	5043659	-	\$20,324.94	-	\$20,324.94
	5043660	-	\$1,294.25	-	\$1,294.25
	5043661	-	\$26,354.92	-	\$26,354.92
	5043662	-	\$26,116.84	-	\$26,116.84
	5043663	-	\$419.46	-	\$419.46

- Once the solid gray bar appears, click to see the component drop down menu. Select **“Web Link”** to create a new **Web Link** component. In this example, we will place a Web Link to the left side of the pivot table.

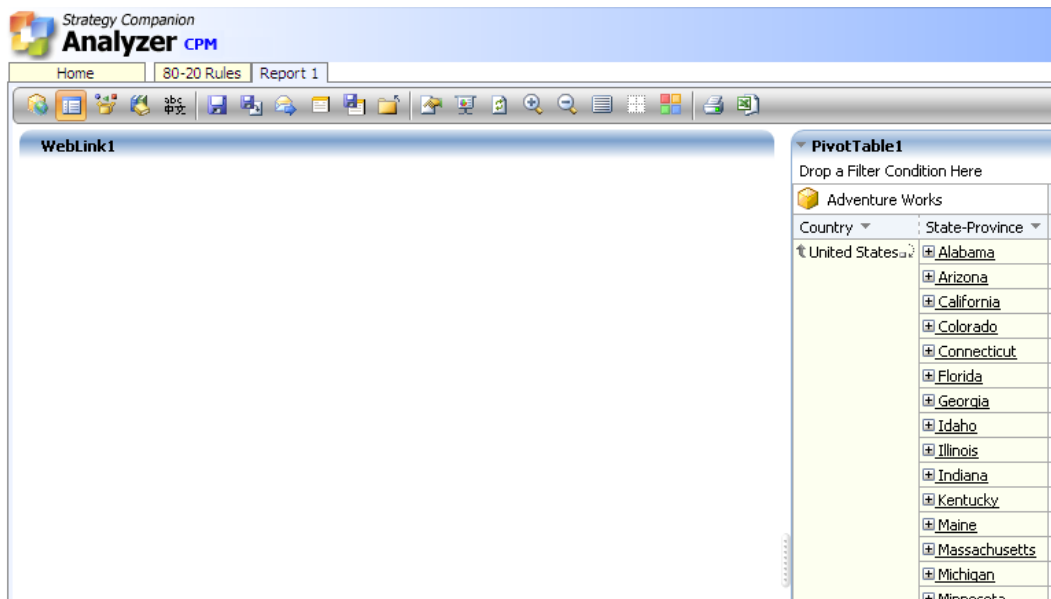


Drop a Filter Condition Here

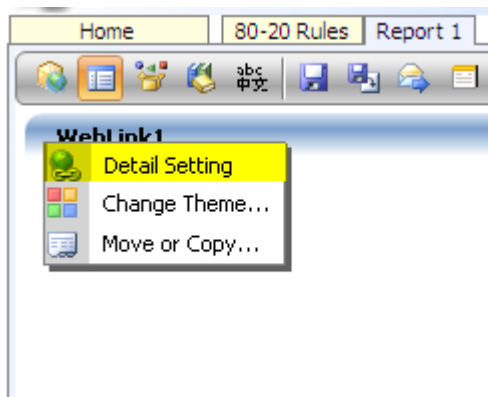
Adventure Works		Drop a Column Dimension Here
Country	State-Province	Reseller Sales Amount
United States	Alabama	\$45,429.03
	Arizona	\$1,432,585.57
	California	\$9,764,270.71
	Colorado	\$2,395,913.84
	Connecticut	\$1,125,700.41
	Delaware	\$2,299,888.87
	District of Columbia	\$1,044,577.80
	Florida	\$227,301.75
	Georgia	\$607,939.97
	Kentucky	\$163,713.84

- Pivot Table
- Analytic Board
- KPI Viewer
- Process Diagram
- Web Link**
- Reporting Services Link

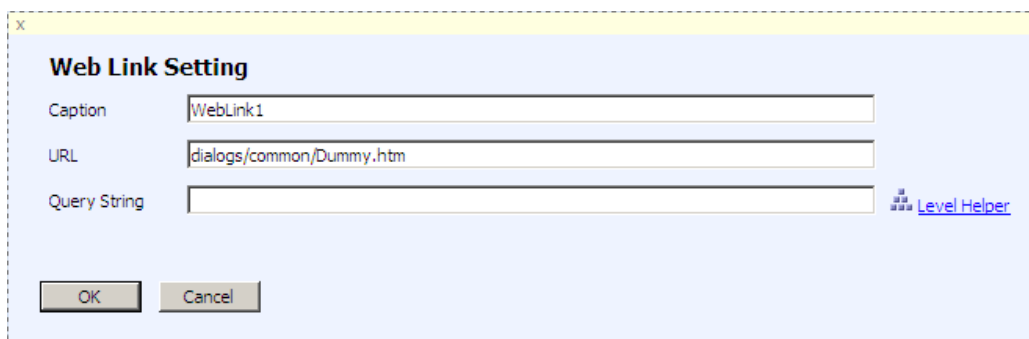
A new Web Link component appears:



3. Click the drop-down menu triangle on the top left hand side of the title bar to access the Web Link Menu. Select **“Detail Setting”** to configure a Web Link.

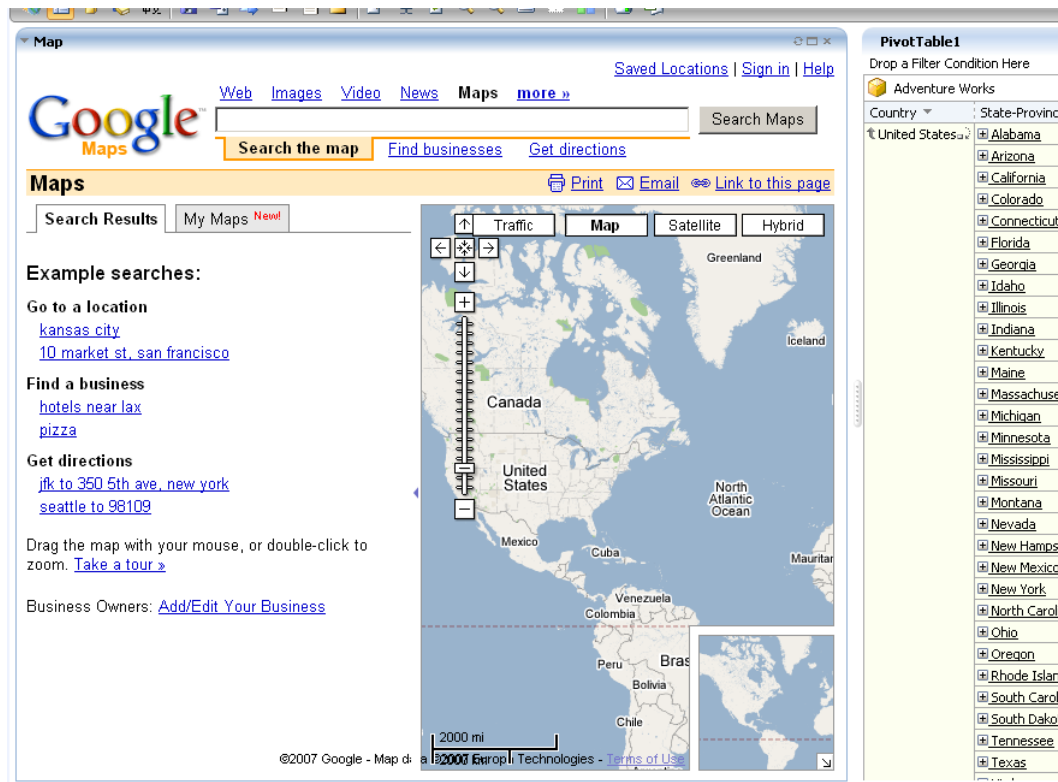
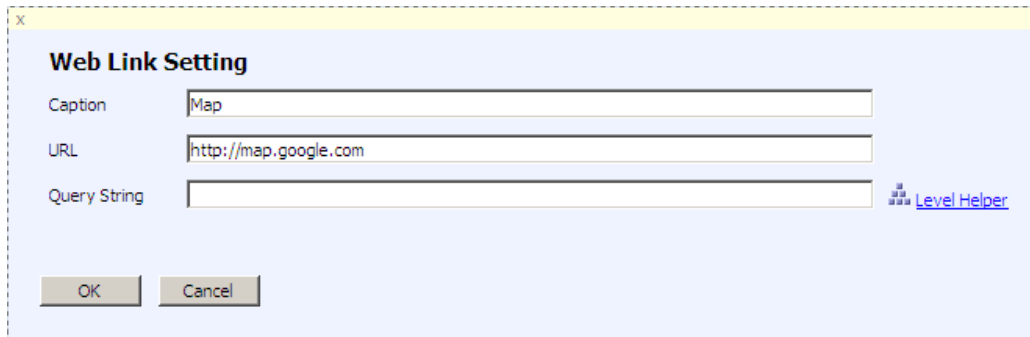


4. Under **“Web Link Setting”**, set up the basic information that will allow you to connect to a web page.

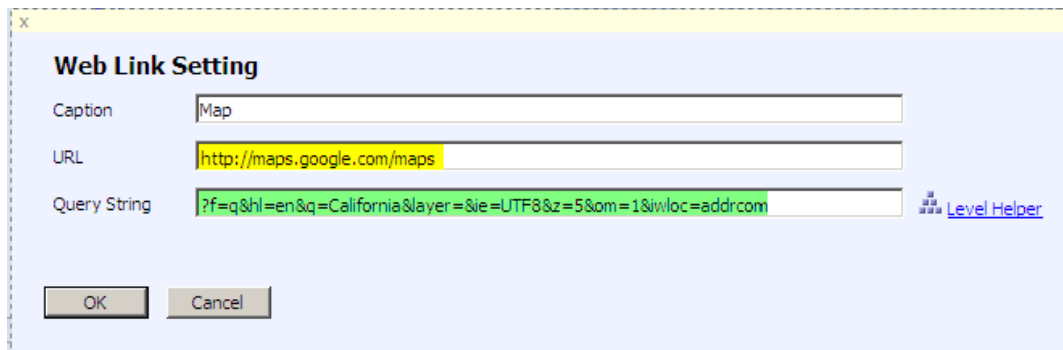
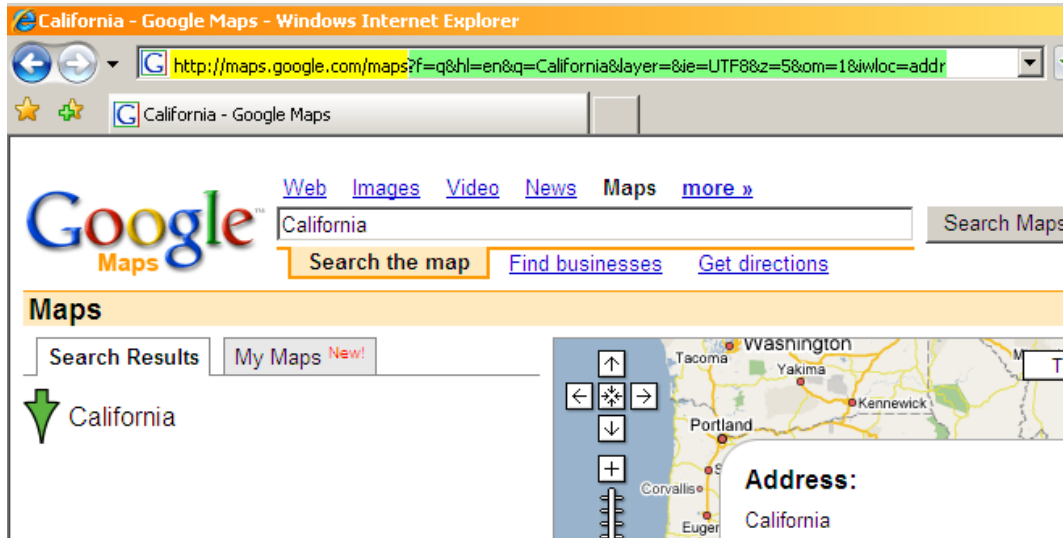


- Caption** Specify a title for this component.
- URL** Specify a web page's URL address. For example:  
<http://www.google.com>.
- Query String** The query part of a URL address.
- OK** Accept the changes.
- Cancel** Leave without accepting the changes.

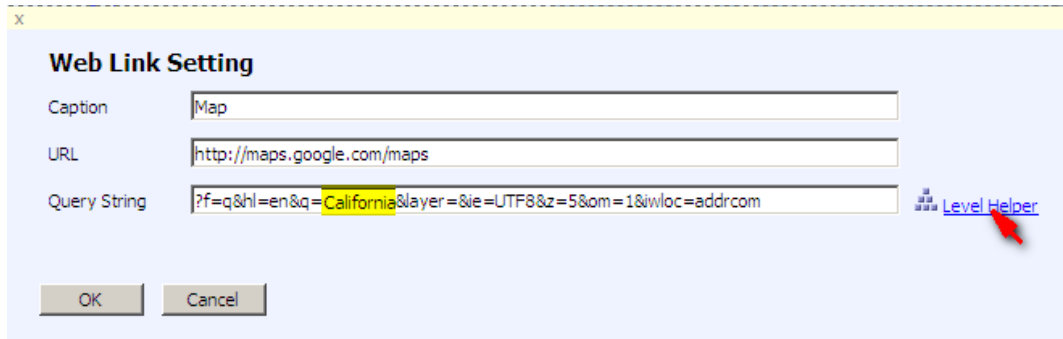
5. For example, using the configuration settings in the image below will allow us to display a Google Map:



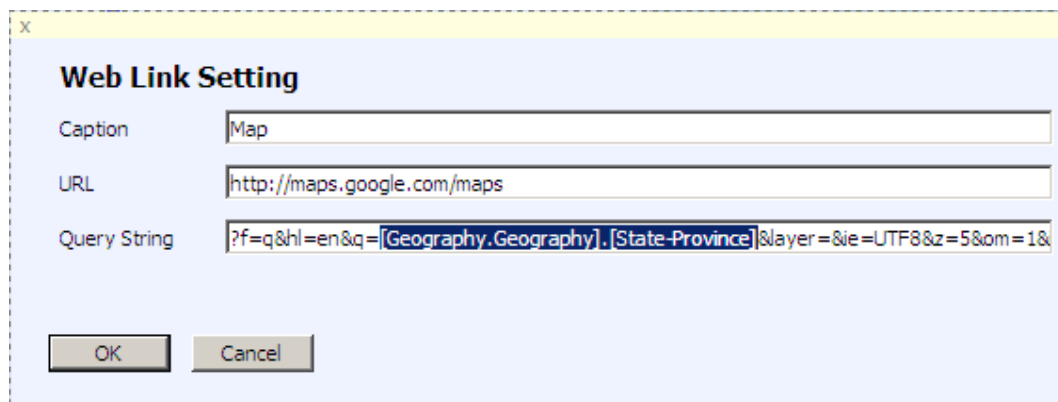
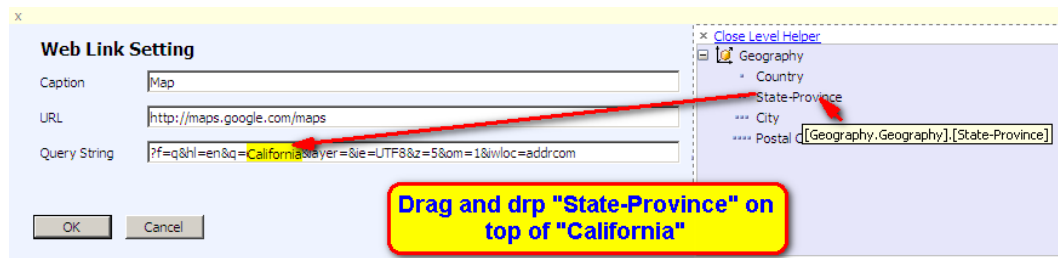
- In addition to displaying a simple web page, a user can also configure the Web Link settings to receive a parameter sent by the pivot table. For example, in order to set the Google Map to change with the state name sent by the pivot table, we will need the complete URL for the Google Map. Enter the text highlighted in yellow in the **URL** field. Then enter the text highlighted in green in the **Query String** field.



- Since we want the map to change dynamically by the parameter sent by the pivot table, we will need to substitute "California" with a variable. We can use **Level Helper** to quickly obtain this variable.



8. After Level Helper opens, expand the tree until “**State-Province**” is displayed. This will give us the correct level. Drag and drop “**State-Province**” on “**California**” to replace it. As long as you drop it on top of the word “**California**”, the program will know to replace “**California**” with “[**Geography.Geography**].[**State-Province**]”. Click “**Ok**” to accept the changes.



9. In order to send a parameter to the Web Link, right click on a pivot table cell to display the contextual menu. Select “**Send Param to Web Link**” and select the Web Link that you wish to send the parameter to:

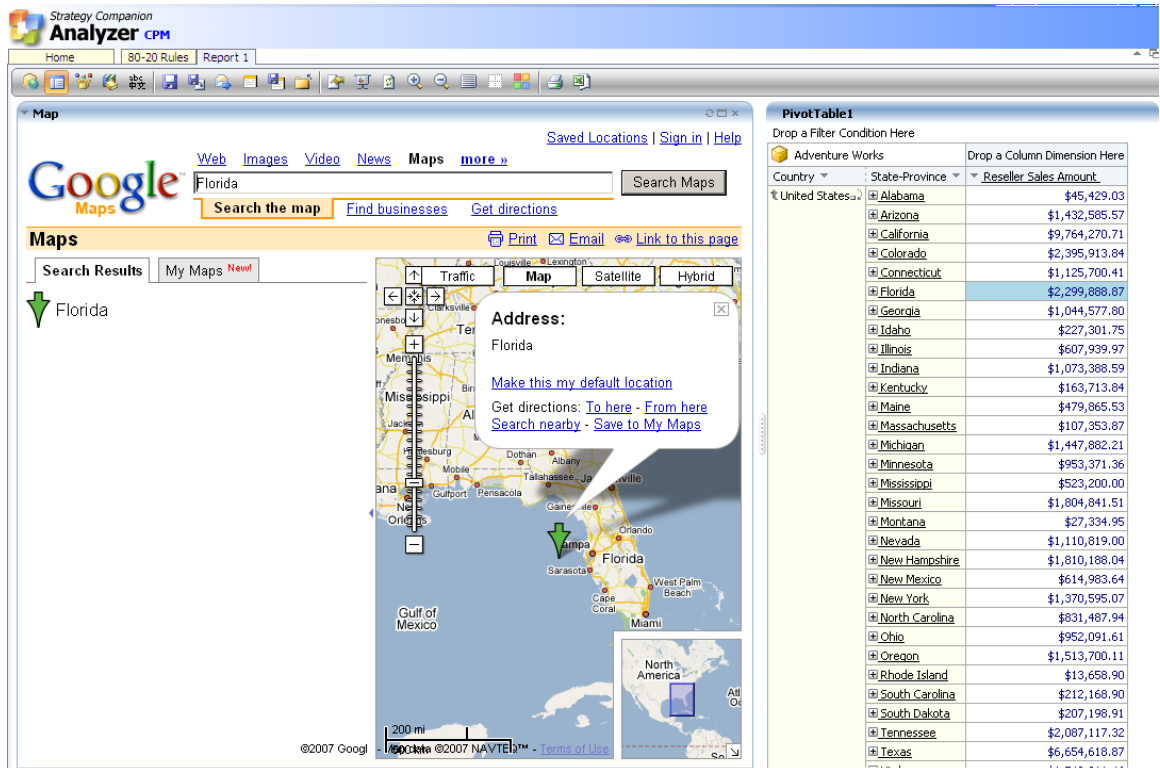
Drop a Filter Condition Here

Adventure Works		Drop a Column Dimension Here
Country	State-Province	Reseller Sales Amount
United States	Alabama	\$45,429.03
	Arizona	\$1,432,585.57
	California	\$9,764,270.71
	Colorado	\$2,395,913.84
	Connecticut	\$1,125,700.41
	Florida	\$2,299,888.87
	Georgia	\$1,044,577.80
	Idaho	\$227,301.75
	Illinois	\$607,939.97
	Indiana	\$1,073,388.59
	Kentucky	\$163,713.84
	Maine	\$479,865.53
	Massachusetts	\$107,353.87
	Michigan	\$1,447,882.21
	Minnesota	\$953,371.36
	Mississippi	\$523,200.00
	Missouri	\$1,804,841.51
	Montana	\$27,334.95
	Nevada	\$1,110,819.00
	New Hampshire	\$1,810,188.04
	New Mexico	\$614,983.64
	New York	\$1,370,595.07
	North Carolina	\$831,487.94
	Ohio	\$952,091.61
	Oregon	\$1,513,700.11
	Rhode Island	\$13,658.90
	South Carolina	\$212,168.90
	South Dakota	\$207,198.91
	Tennessee	\$2,087,117.32
	Texas	\$6,654,618.87

View Source Data	\$77.80
Send Param to Reporting Services	\$01.75
<b>WebLink1</b>	
Send Param to Web Link	\$39.97
Drill Down	\$88.59
Drill Up	\$13.84
Back to Top Level	\$65.53
Discover [ Florida ] Children	\$53.87
Discover [ Florida ] Others...	\$82.21
	\$71.36

10. You will see that the map is now displaying "Florida" as the state of choice:



The screenshot shows the Strategy Companion Analyzer CPM interface. On the left, a Google Map window displays a map of Florida with a green pin and a search bar containing "Florida". On the right, a PivotTable window shows the same data as the table above, with "Florida" selected in the State-Province column.